

ANNUAL REPORT  
2021

CHANGING  
THE NARRATIVE



**PAKISTAN**  
PARTNERSHIP INITIATIVE

# CHANGING THE NARRATIVE

ANNUAL REPORT

2021



**PAKISTAN**  
PARTNERSHIP INITIATIVE

**Facilitator; Collaborator; Representative Voice; Nurturer** - Our identity which cannot be held in one dimension or a particular role. If we want to bring the change, we need to adopt mutli-dimensional strategy to address the multi-dimensional and highly complexed challenges.

*The landscape we share is abundantly blessed with rich heritage, diverse ethnicities and faiths, geo-politically placed with favorable opportunities for regional and global trade, abundant natural resources and most importantly the people who believe in connection, social harmony and bonding. If we recognize this beauty and the significance of our role to act as “Good Stewards of our Land and its Riches”, we can become the “Stimulator of Change” and development of our nation. This is we as PPI- the representative voice of Pakistani Church, envision and strive to establish the fact that each soul on earth is important and their positive contribution make huge impact in our collective growth. We therefore collaborate, facilitate, and encourage meaningful coalitions to have a better tomorrow.*

#### **Technical Oversight**

Ashraf J. W. Mall - CEO Pakistan Partnership Initiative (PPI)

Titus Prince - Senior Program Manager, Pakistan Partnership Initiative (PPI)

#### **Editorial Team**

Neeraj Siddiq, Ashraf J. W. Mall, Titus Prince

#### **Design Layout & Concept**

Digital Ark Pvt.Ltd

#### **Copyright Notice**

All rights reserved under the Copyright Ordinance,1962. No part of this publication is to be replicated, distributed, or transmitted in any form or by any means, including photocopying, recording, or other electronic or mechanical methods, without the prior written permission of the publisher/right holder at the address below. Users are granted to display, download and print portions of this report provided that all proprietary notices are kept incontact. [info@ppicollaboration.org](mailto:info@ppicollaboration.org)

# Acronyms

<b>CATCH</b>	Community Awakening Through Church
<b>ITA</b>	International Training Alliance
<b>KCDA</b>	Kacchi Community Development Association
<b>CCM</b>	Church-Led Community Transformation
<b>CLEW</b>	Community Livestock Extension Worker
<b>FBCP</b>	Fellowship of Brethren Churches, Pakistan
<b>LTS</b>	Life Through Sports
<b>NPN</b>	National Prayer Movement
<b>PPI</b>	Pakistan Partnership Initiative
<b>SHG</b>	Self-Help Group
<b>TILTI</b>	The International Leadership Training Institute
<b>VFK</b>	Vision for Kingdom

# Content

01. Chairman's Message. ....	06
02. Foreword. ....	07
03. Connecting with People for Impactful Initiatives. ....	08 - 09
04. The Big Picture - Fitting Our Vision into a Broader Development Spectrum. ....	10 - 11
05. Building Upon Existing Resources – Wise and Vigilant Actions. ....	12 - 13
06. Partnerships and Collaborations – Together, the Results are Better. ....	14 - 15
07. Covid-19 – A Global Pandemic with Opened Doors to Unite and Fight Together. ....	16 - 17
08. Development and Women – Inclusivity Feeds into the Health of a Society. ....	18 - 19
09. Evidence Base – Informed Actions and Strategies. ....	20 - 21
10. Holistic Development – Multi-Dimensional Approach to Multi-Faceted Challenges. .	22 - 23
11. Our Strategic Plan. ....	24
12. Strategic Priorities. ....	25
13. Strategic Priority: Leadership Development. ....	26 - 27
14. Strategic Priority: Youth Development. ....	28 - 29
15. Strategic Priority: Business Skill Development. ....	30 - 31
16. Strategic Priority: Organizational Capacity Development. ....	32 - 33
17. PPI - A Platform to Connect Local Leadership. ....	34 - 35
18. How Our Partners and Stakeholders View Us?. ....	36 - 37
19. Financials. ....	38
20. Our Values. ....	38
21. Our Core Team. ....	39

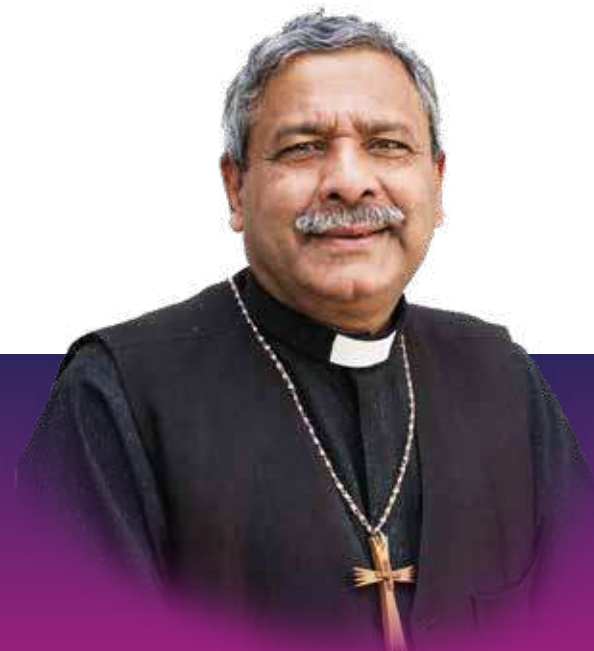
# Chairman's Message

As the year ends, I am grateful to God our Lord, for His faithful and seamless grace that He has kept us covered with throughout 2021. Covid-19 pandemic continued stretching its further impacts on economy and social lives of communities and countries. Same way, Pakistan Partnership Initiative remained doing its best to reach out to communities with all possible assistance to minimize the pain and increase their resilience.

I am delighted to see that this year made remarkable progress in creating more partnerships and collaborations, retaining existing partners in-fact moving many steps ahead into strengthened relationships with them. There is a wave of change in the atmosphere; organizations are coming together, church leaders from different denominations have shown acceptance towards each other, sharing of resources and learning is taking place within the Pakistani Church with the objective in mind to serve the nation together and better.

To my conviction we would not have reached this far without the commitment of our friends in Pakistan and abroad who have generously supported us with their donations as well as other resources; those who have helped our reach possible to grass-root level communities, to those who have owned PPI's vision and have joined hands with us in our journey to build and strengthen this country. Without mention, the dedicated team with their unshaken commitment and untiring efforts, if not have taken the back and front stage, the success could not be achieved. I applaud their talents and amount of hard work they have put in despite of huge challenges mounted to divert their efforts into vain. On top of everything, it has been God who has guided our steps and led us to the bring people together into a united spirit of uplifting our nation.

With the prayer of gratitude for the year that has passed and asking for His wisdom and guidance in the year to come, I would want our readers to remember us in their thoughts and prayers. **God Bless**



**Rt. Rev Humphrey Sarfaraz Peters**  
Chair, Pakistan Partnership Initiative -PPI  
Bishop of Peshawar and Moderator  
"Church of Pakistan"

# Foreword

The Year 2020/21 have been one of the most challenging years with the COVID-19 pandemic, partners have struggled, some have lost their loved ones but end of the day resilience, togetherness and God's graciousness has brought us through. It's been amazing to see how partners have worked together and helped those in need. The collective humanitarian response and impact has been overwhelming. The Church has played a key and important role in serving the people and working alongside Christian faith-based organizations. I am incredibly proud of all our partners and their teams who worked in difficult times, throughout this crisis.

The COVID lockdown provided us with a golden opportunity to develop our six-year Strategic Plan 2020-25, which we are now vigorously following. There are six thematic areas that we are focusing on; Leadership, Business Development, Unity, Capacity Building, Serving Church and Youth and Children. I am thankful to all those who participated in developing this important document.

It has really been exciting to be part of this PPI journey and I remember that one of our key goals was to Empower, Equip and Encourage partners so that they preform to their fullest. Thanks to the capacity building program and cross partner learning, today we have partners who are role models for others to follow. The way in which the Church and Christian Faith based organizations have come together, work together to serve humanity is just amazing. This combination has maximized the impact of the work in many ways, an example is strengthening the 400 businessmen across Pakistan. The donor remarked that this has been one of their best implemented projects that they fund across the globe, which is huge encouragement for PPI and its partners.

I remember when we started the PPI journey many of our partners were working in isolation, not any more, the collaborative spirit has grown. Although we still do face challenges when it comes to working together but gradually things are changing, relationships and trust is growing. The key has been understanding the Big Picture theory and how we are all important in our different roles, capacities and contributing towards one common goal and vision.

I would like to take this opportunity and thank all those who have contributed in different ways towards the development and growth of PPI and its partners. I am grateful to the board, team, supporters and international working group for their stewardship and contribution in making what we are today.

We have the collaborative spirit, human resource, vision and conviction, together let us use these resourcefully to build fruitful and rewarding future. Blessings!



**Ashraf J.W. Mall**  
Chief Executive Officer  
Pakistan Partnership Initiative - PPI

# Connecting with People for Impactful Initiatives

08 Projects met 156,848 individuals with holistic approach to their development needs.



## 14 LEADERSHIP GATHERINGS

as consultations, conferences and reviews to engage key leadership around specific areas of development



## CATCH MODEL

Promoting localized response to development needs of communities



## HOLISTIC DEVELOPMENT

Inner transformation of communities for self-driven external growth



268

## COMMUNITY-LED STRUCTURES

to support resilient and empowered communities



## 65 LOCAL ORGANIZATIONS

were walked along for capacity development



## 425 SMALL BUSINESSES

with around 40 local trades were supported



## 05 STUDIES

around education, livelihoods and covid-19 impact to lead evidence-based initiatives



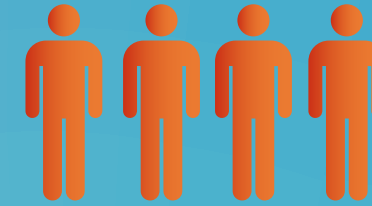
## 10 REGIONAL / LOCAL NETWORKS

were supported/strengthened to enhance participatory development process



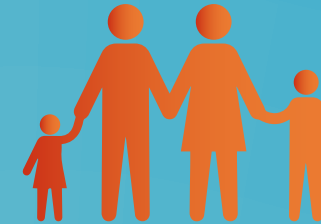
## 700-1000 CHURCHES

being engaged through PPI projects to serve their respective communities holistically



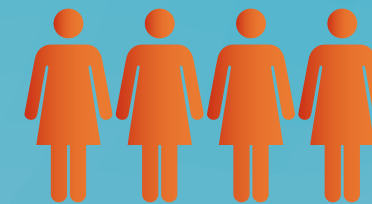
## 547 INDIVIDUALS

have been invested in for effective leadership development



## 54,630 FAMILIES

received relief and recovery support during pandemic.



## 3,108 WOMEN

introduced with livelihood/income generation opportunities



## 3,188 YOUNG PEOPLE

facilitated with career guidance, internships, scholarships and skill development opportunities

With the support of our partners, PPI celebrated its adaptability, connectivity, partnerships, active communities towards their resilience in the face of challenging times of Global pandemic, covid-19.

# The Big Picture - Fitting Our Vision into a Broader Development Spectrum

The process of transformation lies beyond immediate sight and demands the courage to imagine an ideal yet practical state that is well connected with the broader view and perspective and; at the same time takes into account other possible dimensions of growth and prosperity.

PPI, therefore has set its alignment with different tiers of development scope from local, national, regional to international goals. We recognize us being the part of a greater development agenda. We are sensitive towards how our strategic direction are pooling the results into greater impact for a healthy and flourishing world and planet.

Working with more than 250 local communities, more than 65 local organizations, nearly 1000 local churches with the slogan to “Transforming Local Capacities”, PPI is making its contribution into Pillar 1, 2, 5 and 7 of Pakistan vision 2025. This further leads into making investment in UN sustainable Development Goals 1, 3, 4, 5, 6, 8, 11, 13 and 17.

Along with this, we are in constant strive to align our efforts with broader and bigger vision in need to act as one for the well-being of humanity, enjoying life on this earth.

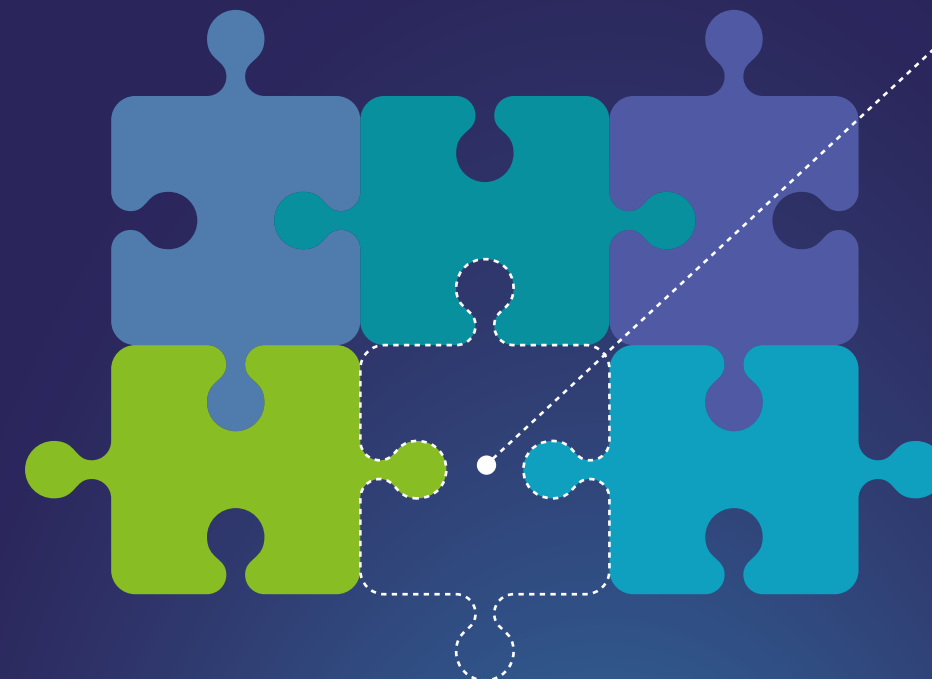


## Food for Thought

Smaller or bigger, does our dream has its part in the collective vision of better a world?

# Big Picture Thinking is associated with “Collective Vision”

Each piece of Jigsaw represents someone or an institution and even if one Jigsaw is missing the Big Picture will not be complete. We all need to work together, play our part to achieve the collective vision.



## Vision:

A Transformed Church serving as a catalyst for holistic Development in Pakistan

Our focus need to be on purpose and not the challenges we face. Moreover, focus shifted from "I" to "We" can achieve greater things.

## Transformed Church

- ◆ **Visionary Church** - “Having a collective vision”
- ◆ **Strong knowledge management**, Institutional Memory and legacy is preserved.
- ◆ **Outward looking Church** - “Church for Neighbors” Blessing for Neighbors.
- ◆ **Connected Church** - Global Church, interdenominational, Govt. & Networking
- ◆ **Adaptation helping in improving resilience** - Adapting to demands & Resilient
- ◆ **Giving Church** - Having strong resource pool to bless others
- ◆ **Praying Church** - Having strong prayer ministry
- ◆ **Compassionate Church** - Source of healing, peace & restoration for the Needy.
- ◆ **Church Incorporating Digitalization**
- ◆ **Church leading in Outreach** - Sending Missionaries not only receiving



# Building Upon Existing Resources – Wise and Vigilant Actions

Management and real leadership are always about effective and smart utilization of resources and gifts at hand. It demonstrates that how we can build upon available strengths to bring about the desired results.

In the year 2020/21, we have looked for successful approaches, tested models and replicated them. We identified structures to further strengthen them and expanded our reach with communities through integrated development model approach. We focused on developing synergies to create multiplier effect and, experimented initiatives to invite innovation and contextualization for community development.



Continued Strengthening

**03 Networks/Forums**  
for Leadership Development  
and Coordination



**Expanded CATCH Model**  
Church led Community Transfor-  
mation to **30** more local  
communities



Replicated **Youth Challenge**  
to encourage another group of  
**500** young people to take  
responsibility of their own community  
needs and development



Continued **08 Thematic  
Interventions**  
each with a new phase  
designed and built upon the  
need of previous



Supported, Promoted and Strengthened nearly  
**250 CCM and SHGs**  
as community-based structures



**Food for Thought**

What lens are we using to change the world – Complain about missing and reinventing the wheel or thinking out of the box to build upon existing?



# Partnerships and Collaborations – Together, the Results are Better

Partnerships and collaborations lie at the heart of PPI's work. Individual commitments, dreams and vision to be turned into a shared one is the ultimate objective that defines our purpose of existence. We have struggled to bring people, communities and institutions together to share a common agenda of uplifting the nation of Pakistan.

In our determination to promote and foster the culture of synergies, consortium approach has been followed with 17 local organizations. We have signed Memorandum of Understanding with development actors and government organizations and, created collaborations with national and international organizations to take forward the cause of society's wellbeing.



## Our New Partners/Collaborative Actors Towards a Greater Pakistan



**Investing in Effective Leadership** with International Training Alliance & The International Leadership Training Institute



**Peace Building and Interfaith Harmony** with Human Rights and Minorities Affairs Department, Punjab Christian Study Center



**Formation of 4<sup>th</sup> Consortium** Extending collective support to communities in South Punjab



**Strengthening Network Approach among PPI Partners and Stakeholders** with Vision Synergy



**Humanitarian Assistance and Local Businesses Response** with International Christian Concern



**Strengthening Humanitarian Assistance** with Community World Service - Asia



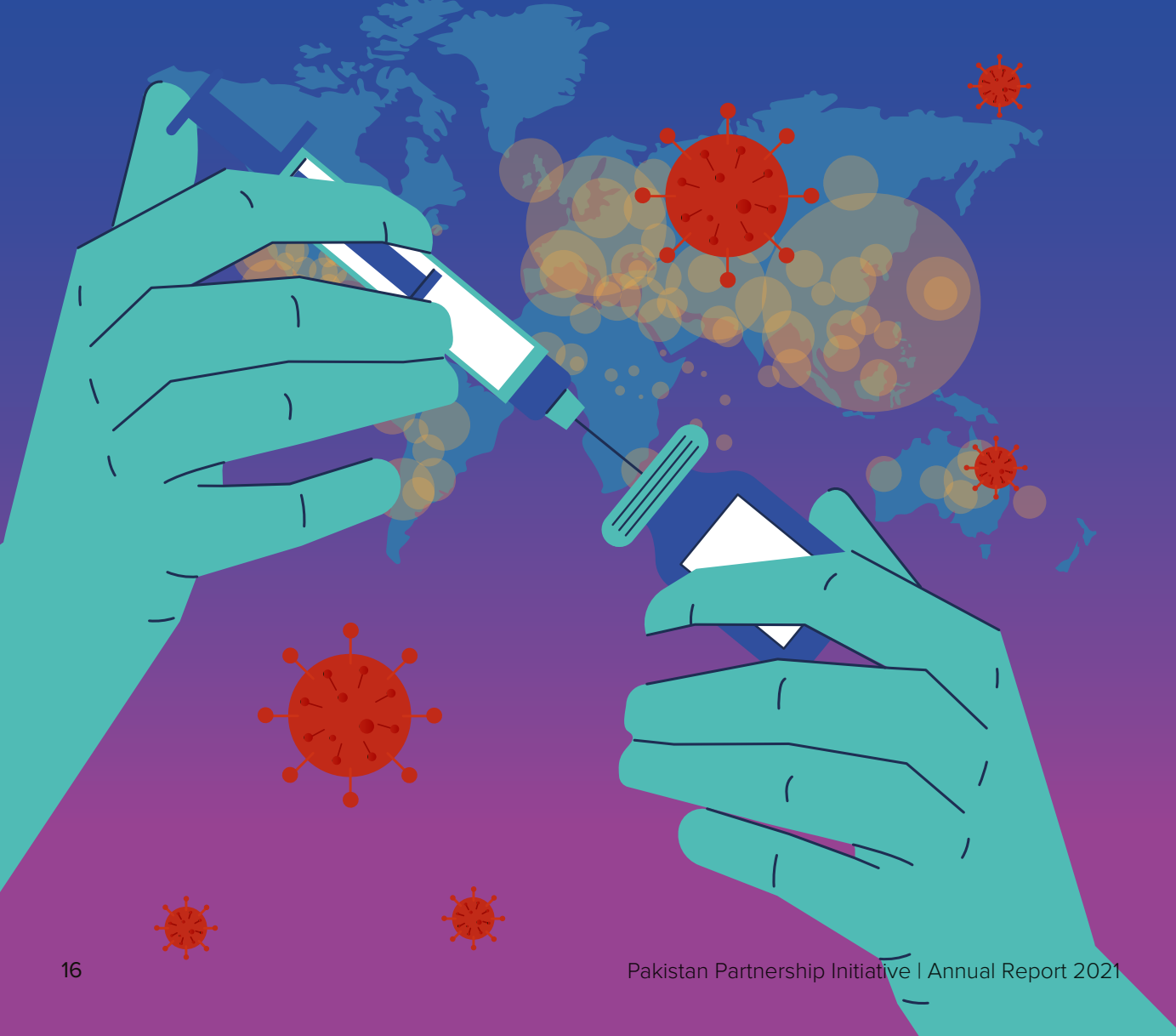
### Food for Thought

Disunity and disagreement, do we consider both the same things and hesitant of dialogue and reasoning? – Healthy dialogues are sign of mature and civilized societies – how much space do we have for this?

# Covid-19 – A Global Pandemic with Opened Doors to Unite and Fight Together

Severely threatening lives across the globe, covid-19 impacted almost all areas of life including state economies. It raised the call for united action and measures to deal with the crises that countries, nations, communities and societies, etc., were facing all alike.

PPI's coordinated humanitarian response with four core response beliefs – Prayer, Care, Share, Fair, have seen more than 100 Churches and local Christian organizations coming together for the first time in the history of Pakistan. They built on their comparative advantage and complemented each other's contribution for a maximized output and impact.



## Humanitarian Assistance

**60,000 Households** have been supported through food aid, hygiene kits distribution, cash grants and small business recovery support.



## Organizational Support

**25 Local partners** have been facilitated with in resource mobilization to further reach covid-19 affected communities



## Coordinated Effort 55

Local Christian Humanitarian Actors joined hands in responding to the needs of local communities.



## Resource Mobilization

**300,000 USD** have been raised to support covid-19 affected communities across Pakistan



## Food for Thought

How adaptive and united are we as a humanity to respond to the crises with fair and equal distribution of resources while responding to the needs of diverse communities with diverse needs?

# Development and Women – Inclusivity Feeds into the Health of a Society

Women represent nearly half of the population of Pakistan and therefore, it is critical to consider their due participation in the process of development. Particularly, when we talk about holistic development it covers those neglected groups as well, who lack equitable access to resources necessary for their growth.

The integration of women empowerment in our all areas of intervention evidently leaves the mark of an inclusive approach. For the past year, our programs have strategically catered the area by extending opportunities to rural and urban women, from social to spiritual formation and from education to business/entrepreneurial support. Women of all ages and different educational backgrounds, different ethnicities comprise the group that is actively engaged in making difference within their respective communities, while using unique gifts and talent.



**14 percent**  
Capacity building grant partnerships are with women-headed organizations to help them gain their due and significant role in uplifting the nation with a lead role



**38 percent**  
of our funds allocation has targeted investing in women empowerment through our community development projects



**Nearly 3,000**  
Rural women among our right-holders have been supported with self-help and socio-economic development initiatives



**Nearly 50 percent**  
Young women from urban and semi-urban communities have been supported with higher studies scholarships, career development, personal growth and spiritual formation initiatives



## Food for Thought

Development plans with lack of women participation means missing half of the opportunities and strength that we carry as a society. Women share almost 49 percent of our population, each holding a unique strength to contribute in communal development process. Do we have adequate and meaningful engagement of women in our way to development?

# Evidence Base – Informed Actions and Strategies

The paramount elements of the development process are the studies and setting an evidence-base which ensure our commitment and desire towards need-based intervention model. Pakistan Partnership Initiative has built its foundation with due process of situation analysis and objectively defining the critical factors, needed for the purpose.

Working with Christian organizations as our central and one of the main stakeholders, PPI took the process of taking informed actions based on gathering the baseline-data around its key strategic interventions. Our five studies around Education, Covid-19 Impact on Livelihoods and, Business Prospects for Christians in Pakistan, provided us deeper grounds and thoughtful consideration towards our strategic planning for the next five years.



## Findings from the Studies Carried out by PPI and its Partners



**61 percent**

Christian young people aged between 18-29 are unemployed and 62 percent of them are not looking for employment for various reasons.

Challenges of Christian Youth in Pakistan  
-People's Perspective



**2.6 percent**

of the enrolled students (29 out of 11,440) reach higher education. The female student dropout-rate after matriculation is 52 percent and is higher than the male students.

Higher Education – An Unattended Notion



**70 percent**

of the daily wage workers, laborers and job holders have lost their source of income in Covid-19 and 60 percent of the community have their savings exhausted.

Impact of Covid-19 on the Livelihoods of Christians in Pakistan



The Christians in Pakistan are living in state of fear and insecurity, they lack the confidence to initiate the business which in turn is restricting the market space.

Business Prospects for Christians in Pakistan



### Food for Thought

How much space have we created for the dialogues, analyzing situations and reaching collective and informed solutions for our growth as one society?

# Holistic Development – Multi-Dimensional Approach to Multi-Faceted Challenges

We have learned over the course that deep-lying factors to key development priorities have more than one dimensions. Therefore, our strategies must be comprehensive enough to deal with such challenges that the effect of one would be minimized over another while working towards the main solution.

The projects designed with the lens of holistic development, have reached communities and organizations in a manner which was more than an ordinary pattern to them. With the combination of inside-out transformation, PPI over the year has invigorated the sense of self-vitality within its partner organizations, communities and individuals to trigger an automatic self-development.



**Development Theology**  
centered around Church and engagement of other local bodies for contextualized, sustainable and effective interventions



**Community Awakening Through Church - CATCH**  
with community-led transformation model to help stimulate and empower community for self-help initiatives



**Youth Development Model**  
Invests in Spiritual, Professional and Personal Spheres as three key areas of an individual's growth



**Organizational Development Model**  
facilitates Resource Mobilization, Structural Strengthening and Human Development to stabilize organizational existence and its meaningfulness

Moreover, we do understand if gender inclusivity is not taken consideration, we do miss out the critical component of our taskforce. Therefore, women are our equal stakeholders in terms of receiving the services and serving the deserving.



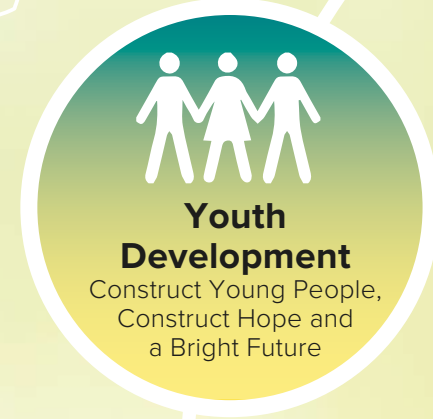
## Food for Thought

We are not supposed to do all by ourselves and so we need each other to address different elements of the same problem and need. How collaboratively and holistically we approach our right-holders to be as effective as possible?

# Our Strategic Plan

## Responding the Present, Positioning for Future

With the year 2020 and 2021 responding to the emergency crises caused by the pandemic, PPI's strategic plan largely remained on track. It brought us significant moments to celebrate the collaborative efforts that we have put into reaching the needs of our communities and stakeholders. Our major strategic priorities are set out to be as: Leadership Development, Youth Development, Organizational Capacity Development and Business and Skill Development. Ever-determined to raise our quality standards to serve our stakeholders, PPI places coordination, collaborations and partnership at the core of its strategic planning.



# Strategic Priorities

## Interconnected, Integrated and Interdependent in Transforming Local Capacities

While “Networking and Coordination”, Resource Mobilization” and “Women in Leadership” as cross-cutting threaded into the main themes, all represent integration in action. Further their alignment and contribution into the national and international development agenda helped us create and expand our impact to a greater scale.

# Strategic Priority: Leadership Development

## Leadership Influences the Situation either Challenging or Exciting

Leadership navigates direction of a nation. The attributes an effective leadership carries are more than just outward competencies. PPI believes, it's the character of a leader which distinguish them from crowd. Integrity & accountability of a leader lies at the top.

Through our partners, we have invested our resources in working with existing and emerging leadership. It is to bring them together to balance and complement their talents, tools, knowledge, learnings, experiences, exposure, energy, optimism, commitment, passion, persistence and foresightedness. Moreover, it is also intended to inculcate a meek attitude learning the fact that we are stewards of God's creation on earth.



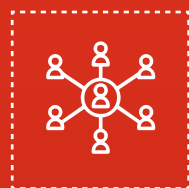
We have Reached



National Leadership Consultation



Leading Through Crises



Connecting Connections



Strategic Planning Meeting of International Working Group Connections



Training for Church Leaders on Church Management



Church Leadership events – Churches Community Members



TEF National Consultation



PPI Annual Lessons Learned Workshop

## Emmanuel Asad

Pioneer to introduce Tchouk Ball in Pakistan

### Witnessing Breakthrough Potential among Leaders' Collaboration

Stimulating change and reaping its multiplier effects, so amazingly caught our attention when we heard Emmanuel Asad, during one of our leadership workshops held around the topic 'Effective Networking'. Being the head of a local organization, "Peace Through Education and Sports", Emmanuel shared a series of events in His life that have led him to finally see delightful hope towards realization of his vision. He is the pioneer to introduce Tchouk Ball in Pakistan through his academy that he created in 2006. The academy is meant to serve Pakistani community, particularly the marginalized communities. Till day, he has trained thousands of players and is providing free coaching and trainings to young people from across Pakistan with passion and commitment to learn sports. "Worked extensively for young people across Pakistan and even besides achieving huge success, I felt a gap. I had lost hope if I have been able to do what I really had pain for. I wanted to reach Christian young people as the community is living in serious marginalized state lacking choices and opportunities for growth but I was not able to find many. Moreover, resource mobilization was a crucial part too. For my regular sports camp, one of my Pastors helped me finding some place in Ghanool for the event. Meeting friends there and sharing about my service and vision, I was directed to meet the leadership of FBCP—A partner organization of PPI. Together we organized a tournament with support of PPI. That was the beginning and here I am in this training with an overwhelming sense of gratitude that I am sitting in a network. I have now access to the organizations which share my vision of developing marginalized Christian communities. There is so much to do and I am so looking forward how I can form impactful collaborations to take my vision further in translation to create greater and lasting impact." The words of Emmanuel brought us encouragement seeing that our efforts with leadership are going long way and we have just planted the seed of synergy and collaboration, and the wave of change has taken its own route.

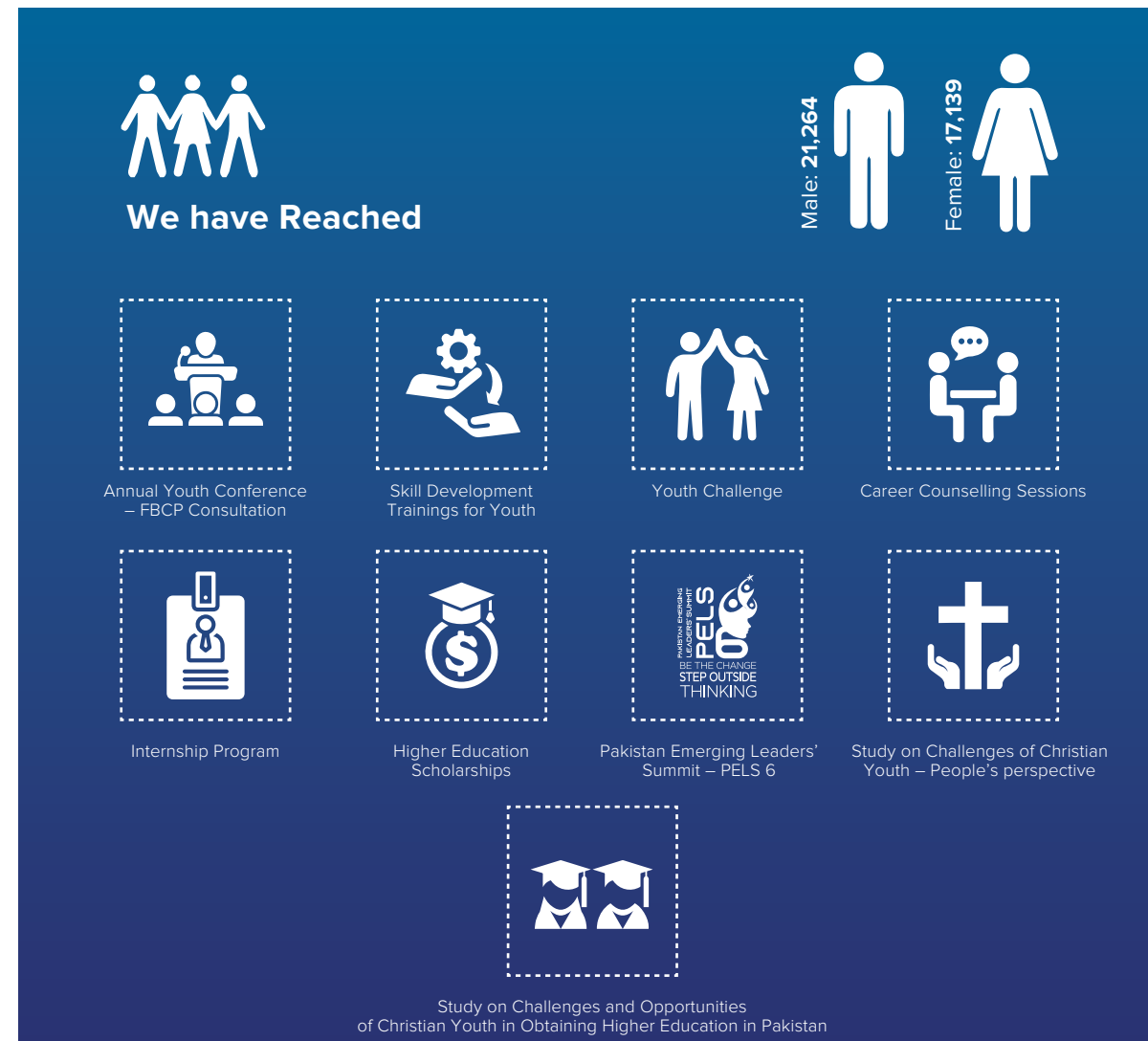


# Strategic Priority: Youth Development

## Young people with the Right Passion, Right Commitment and the Right Gifts may Change the Course of a Wrecking Ship

Pakistan Partnership Initiative recognizes the fact that future lies in the hands of young people of today. They are the masons of the nation and; to build an exemplary nation we need to equip and empower our youth.

Throughout the year, we have been engaged with young people in various projects and initiative to help them with their personal, professional and spiritual growth. To realize holistic change, we have catered various dimensions and aspects that are critical for their development. Scholarship and internship programs, self-led community development challenges, revitalizing the connection between the Church and youth, entrepreneurial support, remained some of the key areas of our investment of time and resources in our present and future leaders.



**Saim Imran**  
Scholarship Recipient



### Real Transformation Doesn't Know Any Barriers

We are glad that our efforts are serving as a stimulus within communities and prompting them to think, analyze their situation and dig out deep root causes that have held them in a state of deprivation. Umoja refers to “unity” or “togetherness”, the message was conveyed through a training to PPI partners and their associated Churches. As a result, CCM structures were formed consisting the leadership of the local churches, their congregation members and their youth. Identifying their communities’ major needs, the top ranked appeared as “Most of our youth cannot afford higher education and thus, contributes in maintaining the poverty loop”. In result, the “BETHEL EDUCATION SUPPORT PROGRAMME” was launched by the community and Church together.

Saim Imran after securing the marks above 75 percent, successfully entered the eligibility criteria for higher education scholarship program. With a very humble background, his father is a daily wagger and is unable to earn an amount which would cover the expense of his son’s higher education. “My father has always given huge preference to our education despite of high capacity to accommodate our educational and recreational needs, apart from our basic needs. He had deep desire that we have good education which may lead us into decent jobs, but our financial conditions always discouraged him. I am privileged to be the part of Church and Community, who have heart for their people as I have seen, two more of my fellows are being supported with higher education initiative under the same project.”

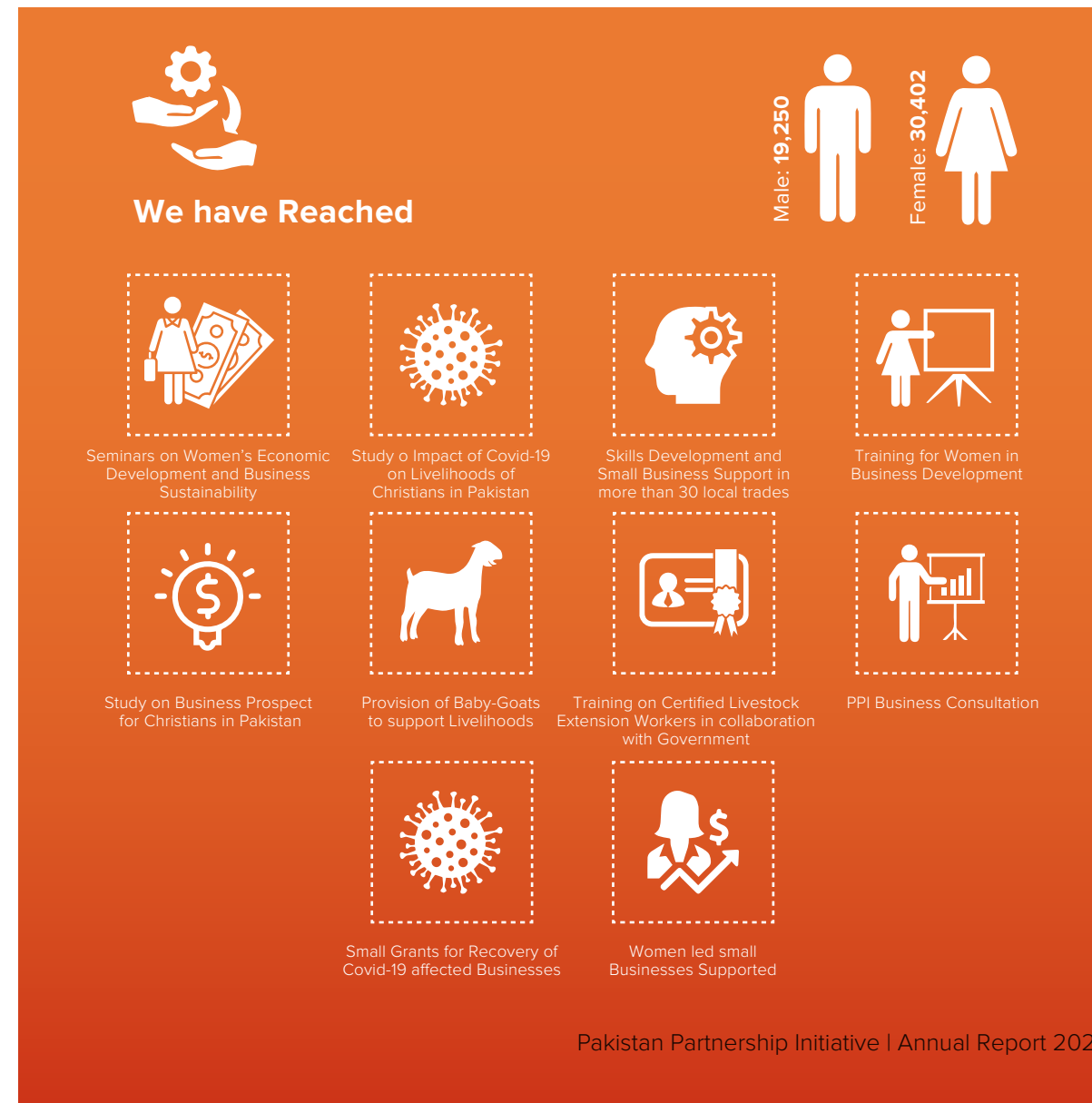


# Strategic Priority: Business Skill Development

Economic spike is the critical wheel of holistic development and crucial component of social uplift!

We cannot eliminate poverty overnight with one-time and time-bound interventions. This requires commitment, ingenuity, consistency and persistence. Most importantly, it demands the right kind of attitude from both the supporter and right holder to let the seed flourish overtime and become a fruitful tree.

The business and skill development component has supported the lives of many across Punjab and Sindh provinces. Skill development initiatives for women and young people, seed grants and business development trainings to generate livelihood opportunities, formation of local committees to work on community support programs including monthly savings and loan borrowing, have helped our communities to make a better living for themselves and their families.



**Lachi**  
A Certified CLEW



## New Horizons New Dreams

Marginalized communities with marginalized access to resources as well as information, when meet the exposure that matches their potential, bring forth breakthroughs within communities. Women as extension worker is not a very common trend, in fact rural women do not tend to earn educational certificates. Lachi and her husband were working as laborers for the past 20 years. Life started taking a new turn for them when Lachi joined a self-help group and then during a meeting showed her willingness to be the part of group intended to be trained as community livestock extension worker - CLEW. "After the training, as soon as I started my services in the community, the initial profit I made was of Rs.2000/-. It is an amazing feeling to learn that I am a certified extension worker now. Although, it does not bring me huge income but with the passage of time, I am hopeful that once I open my clinic at home and once my services gain acceptance, it will become an additional source of income to me."

Lachi, wife of Thawar is the resident of Mevo Patel village in district Mirpurkhas. Like many of her fellow village women, she is an active member of the self-help group, making regular savings. The CLEW training and certification has boosted her morale so amazingly that she is encouraging other women of her community and the SHG to follow their dreams of becoming economically empowered and support their families.

# Strategic Priority: Organizational Capacity Development

Strong Institutions are led by strong people and lead to strong communities!

Pakistan Partnership Initiative in its struggle towards strengthening local capacities, does aim to make sure that all possible opportunities to development, falling in our mandate are fully being taken into account.

We are connected with more than 65 local organizations and 250 local churches to help them develop their organizational capacities to the point that their service to their target communities may create a chain effect. Our efforts are purposed to promote dynamic institutions that have the ability to keep the process of development alive once we leave. Trainings on staff capacity development on governance and management, facilitation in strengthening support department, strategic direction and technical assistance to meet government compliances, organizational governance and meaningful communities reach, are the broader areas remained our focus of the year.



**Bishop Mushtaq**  
CEO of PPI's partner organization



## Commitment, Willingness and Support to Realize Development

*“From the very beginning as I got to know PPI’s vision “Strengthening and Uniting Church for Holistic Development in Pakistan”, I was convinced that it embodies VFK’s vision and my passion. To build unity and collaboration, PPI’s efforts are like a bonus. I am sure, soon they will be carrying a series of success stories with them reflecting how God has used them abundantly and gloriously. It’s a privilege for me that I am part of this group. I believe, God has a greater plan for us in the coming days.”* Bishop Mushtaq, CEO of PPI’s partner organization has been sharing his views after attending one of our trainings on “Networking and Collaboration” that was organized for organizational leadership.

It has been a journey for Bishop Mushtaq and PPI, that started two years ago. We began this partnership with VFK by carrying out a detailed assessment of their organization. Based on the identified strengths and weaknesses, organizational plans were developed and implemented with them. “To work with a fair governance structure, I have to step down from the position of Chairman and took the responsibility of Executive Director”. It was a realization that the organizational assessment has brought forward to us. This partnership through its capacity development program and its grant management initiative has helped us improve manifolds. Our operational systems are now in better place, our community reach capacity has been strengthened, and understanding towards organizational leadership and its management has been increased and; after all of this, we have been able to appreciate the networking efforts that PPI is making for local organizations in Pakistan”.

VFK is committed to develop themselves for their own benefit and for the benefit of communities they are serving. It’s their commitment and willingness that the support of PPI has borne fruit and comparing their annual due diligence scoring, they have been awarded with the certificate of appreciation after securing 100% scores in 2021 around eight key particular areas of their organizational governance and management. They are the role models with passion and commitment to grow and we believe, it’s just the beginning.

# PPI - A Platform to Connect Local Leadership

**National Leadership Gathering** – With representation of more than 40 Christian leaders from all across Pakistan, the gathering helped develop inter-sectoral linkages and networking to strategically map out resources and collectively set broader mandates and benchmarks. The idea was to reduce the gap between Church and other sectors leading towards collaborative reforms through collaborative structures with each sector playing its key role in their particular area for sustainable results. Inclusive approaches regardless of age, gender, interdependence, looking into Biblical patterns of leadership and development received due recognition by the group of invitees. The fact was learned that Church must realize its central part and instill the Christian leaders with Christian values in modern day context, so in result we can regain the identity and credibility that we have lost as Pakistani Church.



**Connecting Connections** - Pakistan Partnership Initiative recognizes the simple and straight fact that Pakistani church without concerted prayers will by no means can reach and meet its fullest potential. Our vision to strengthen the church will only be realized if we through our personal and collective prayers welcome the divine and holy intervention in our efforts. PPI's National Prayer Movement is a humble yet critical contribution towards reviving the role of Pakistani Church in wholistic development of Pakistan. NPN movement has been started in 2017 and thus far has successfully made its due part is creating four regional prayer networks in the country among its first few initiatives. The networks are actively engaged in offering the prayers before the throne of the Most-High to offer their gratitude and supplication for our beloved country.



Connecting Connections - Prayer drives our steps into the right direction to serve others.

**PPI Lesson Learned Workshop** – A two-day programme, scheduled and followed by rich discussions and insights around PPI's six strategic aims, with the main objective to gain partners' contribution into our strategic planning for the next six years. Grant partnerships have been evaluated in term of their positive and otherwise impact in a broader context. Moreover, to be more effective towards our collective vision of Pakistani Church becoming the source of blessing for Pakistani nation, PPI took this opportunity to take partners' view on its role as the facilitator of development and how well its being performed.



Lessons Learned Workshop - Our Regular Annual Review with our Grant Partners

**Leading Through Crises** - “Leading Through Crises” a 3-day training course was among the similar initiatives that PPI and The International Leadership Training Institute- TILTI brought together for PPI partners and stakeholders. The learning opportunity initially targeted a group of Christian leaders serving at different tiers of the leadership in their respective organizations operating across Pakistan. The mix of young and senior, highly experienced and emerging individuals, men and women elevated the learning atmosphere with their insightful and encouraging input during the sessions. The level of participation and engagement of the present group, spoke itself of the effectiveness, relevance and its practical implications in the real-life situations.



Leading Through Crises - A workshop provided a unique lens for leaders to grow through storms.

**Pakistan Emerging Leaders' Summit** – PELS-6 promoted the idea of discipleship, responsibility and interdependence. Discipleship is a relational concept in which a person influences the life of another. The time today, demands both the attributes –leadership and discipleship. 100 young people from all corners of Pakistan, excitedly and passionately participated in the leading and networking gathering.



## How Our Partners and

## Stakeholders View Us?



The capacity building support from PPI compelled AWARD to diversify their funding pool and tap the opportunities entailing corporate funds. They approached Levis supported corporate funds. Although, we were unable to secure the funds at this time but a connection has been developed, process has been learned and we can build on this learning further.

– **Mrs. Christina Peter**

Strengthening Networks and Collaborative initiatives in Pakistan is a critical role being taken up by Pakistan Partnership Initiative. Vision Synergy endorses its efforts and is honored to provide advising support.

– **Tim Brown, Sr. Regional Director, Vision Synergy**



The journey from individual efforts to a collective and collaborative endeavor, has gradually begun to bring fruit of harmony and togetherness. The participatory approach in comparison to the past two years, has increasingly been visible this year. Partners who were previously reluctant to collaborate, are now sharing their resources. There are friends who were hesitant of making dialogue initially, but now are open to have discussions, sharing ideas and testimonies for collective betterment of our nation.

– **Ms. Yasmine Joseph**

The Pakistan Partnership Initiative is an expression of God's desire to see the Pakistani Church work together, to partner to collaborate and to strengthen her organizations and institutions for longer term-fruitfulness. It is exciting to see this work being done.

– **John Douglas, Director, AAC**



Our interaction and collaboration with PPI over the period of time has brought in the learning that the effective role of the network is not limited to achieving the vision instead, also taking everyone along and building their capacity to be able to contribute to their fullest potential for a greater purpose. Looking forward to how we can lend support to each other for our collective cause of strengthening and developing the Pakistani nation.

– **Albert David, SALT**

I must say that in a very short time span PPI has presented a precedent pattern of unity – the unity dreamt by Christian community since ages. Their efforts are appreciated as they have seen a great level of success in bringing together the organizational/institution's leadership and the government representative, and political leadership at one platform where our people can come and discuss the one-point agenda of community development.

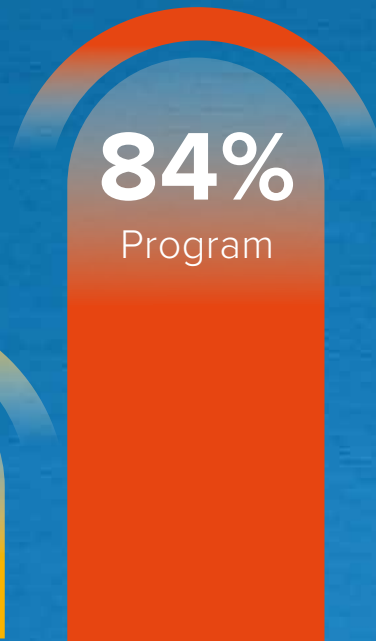
– **Asiya Nasir, Ex- Parliamentarian**



# Financials

Program: **84%** (Leadership Development, Business Skill Development, Organizational Capacity Development, Humanitarian Assistance, Youth and Children).

Operations: **16%**



# Our Values

## Quality and Accountability Framework



### Being professional in all that we do

We want to be the best that we can possibly be and to honor God in all of our work that we do. Setting clear quality standards and ensuring that we are adequately resourced and our staff are well trained in order to meet those standards. That our processes and procedures are transparent and up to date. That our team acts with responsibility and integrity in whatever it does. We constantly encourage and learn from each other to develop our capacity and capability.



### Seeking to be creative and innovative

In today's day and age we find ourselves in situations that are difficult and complex. We encourage and value creativity and innovation by our partners, colleagues, volunteers and supporters in helping to find positive solutions in any given situation



### Placing people at the heart of our work

We affirm that every individual is made in God's image, therefore people at the heart of the work that we do. We treat people with respect and dignity in all our dealings with others, irrespective of ethnicity, age, gender or religion. We seek to enable people to live peaceful and happy lives, to reach their full potential and provide them hope for the future.



### Encouraging collaboration and partnership with others

We encourage collaboration and partnership for a better, peaceful future and impact. We are therefore delighted to work in partnership with others who share our purpose and sense of mission. We seek partnerships where; there is mutual respect for each partner's contribution, there is the freedom to be honest, open and transparent, where partners seek to learn from their relationship and activities, there is the ability to take risks and there is long term commitment to one another evidenced in shared values and understanding.

# Our Core Team

**Ashraf Mall**  
Chief Executive  
Officer



**Titus Prince**  
Senior Programme  
Manager



**Asher Shahzad**  
Capacity Building  
Coordinator



**Niswan Walton**  
Finance Manager



**Neeraj Siddiq**  
Communications &  
Coordination Officer



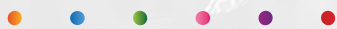
**Kamran Sajjad**  
Grant Making Officer



**PAKISTAN**  
PARTNERSHIP INITIATIVE


### LEGAL STATUS


Pakistan Partnership Initiative was registered in 2011 as a non-profit organization under the Societies Act 1860 and signed an MOU with Economic Affairs Division (EAD), GoP in 2020.




**TRANSFORMING  
LOCAL CAPACITIES**


 [www.ppicollaboration.org](http://www.ppicollaboration.org)

 [info@ppicollaboration.org](mailto:info@ppicollaboration.org)

 [pakistanpartnershipinitiative.org](https://www.facebook.com/pakistanpartnershipinitiative.org)

 [pakistanpartnershipinitiative.org](https://twitter.com/pakistanpartnershipinitiative.org)

 Phone: +92 51 8480848

 Islamabad, Pakistan